

Worksheet – Converting Measurement 1

DATE _____

Where appropriate, round to four decimal places.

1. Make the following conversions:

a) 16 inches = _____ cm

b) 2.5 yards = _____ m

c) $83\frac{3}{4}$ inches = _____ cm

d) 14 feet = _____ cm

e) 58 cm = _____ feet

f) 7.5 km = _____ miles

g) 12 850 cm = _____ feet

h) 13 450 m = _____ yards

i) $12\frac{7}{8}$ feet = _____ cm

2. Make the following conversions:

a) 17 inches = _____ mm

b) 2.6 yards = _____ cm

c) $85\frac{3}{4}$ inches = _____ m

d) 17 feet = _____ m

e) 64 mm = _____ feet

f) 475 m = _____ feet

g) 1.5 km = _____ feet

h) 7.2 km = _____ yards

i) 6.8 m = _____ inches

j) 17 945 m = _____ miles

3. Tyler purchased a 24-volume set of encyclopedias. Each volume is 70 mm wide.

a) How many millimeters of shelf space will he need to display the encyclopedias? _____

b) Approximately how many feet of shelf space will he need to display the encyclopedias (hint: round up to the nearest foot)? _____

1. Make the following conversions:

2 decimal places

a) 16 inches =

$16 \times 2.54 = 40.64$

or

$\frac{16 \text{ in}}{\times \text{ cm}} = \frac{1 \text{ in}}{2.54}$

40.64 cm

b) 2.5 yards =

$2.5 \times .915 \text{ m} = 2.29$

or

$\frac{2.5 \text{ yd}}{\times \text{ m}} = \frac{1 \text{ yd}}{.915 \text{ m}}$

2.29 m

c) $83\frac{3}{4}$ inches =

$8.75 \times \underline{\hspace{2cm}} = \boxed{\hspace{2cm}}$ or

_____ cm

d) 14 feet =

_____ cm

e) 58 cm =

$58 \text{ cm} \div 30.5 = 1.90$

or

$\frac{58 \text{ cm}}{\times \text{ ft}} = \frac{30.5 \text{ cm}}{1 \text{ ft}}$

1.90 feet

f) 7.5 km =

_____ miles

g) 12 850 cm =

$12\ 850 \div 30.5 = 421.31$

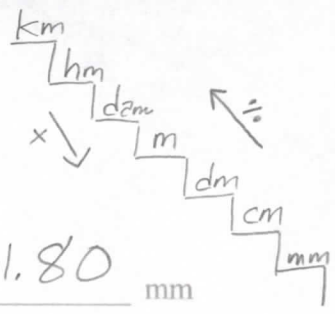
421.31 feet

h) 13 450 m =

_____ yards

i) $12\frac{7}{8}$ feet =

_____ cm



2. Make the following conversions:

a) 17 inches = convert to cm then 431.80 mm

$$17 \times 2.54 = 43.18 \text{ cm} \times \underline{\underline{10}} = 431.80$$

b) 2.6 yards = convert to m then _____ cm

c) $85\frac{3}{4}$ inches = 85.75 _____ m

d) 17 feet = _____ m

e) 64 mm = change to cm first! _____ feet

f) 475 m = _____ feet